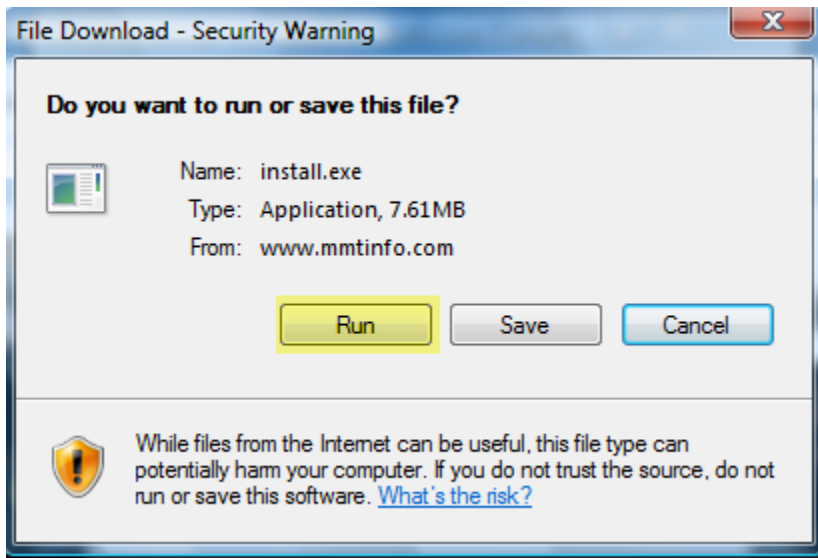


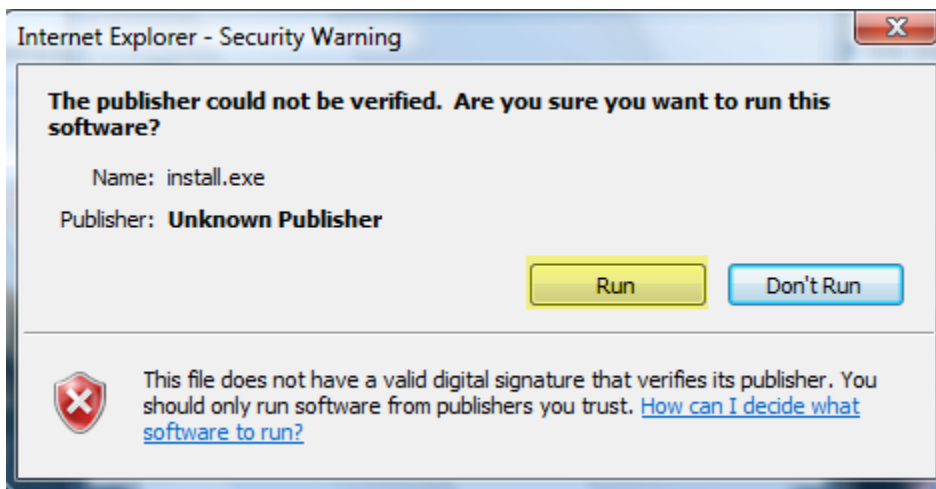
# PIRS

## Download and Installation Instructions

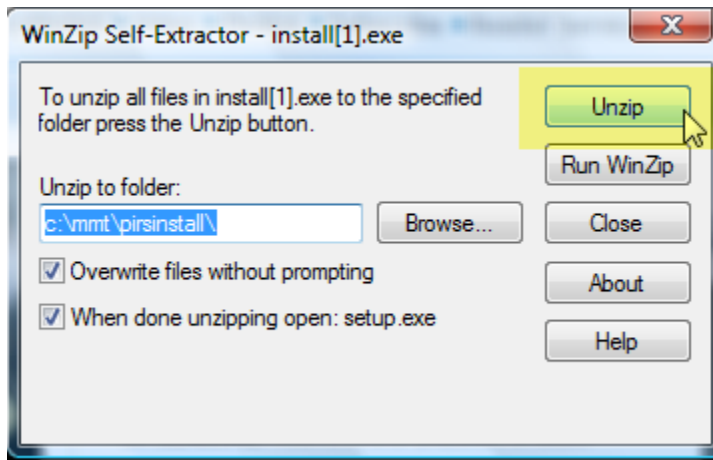
1. You will receive an email from MMT with a link to the updated PIRS Program. Click on the link or copy and paste into Internet browser, then follow the steps outlined below.
2. When you see the following menu, click "Run".



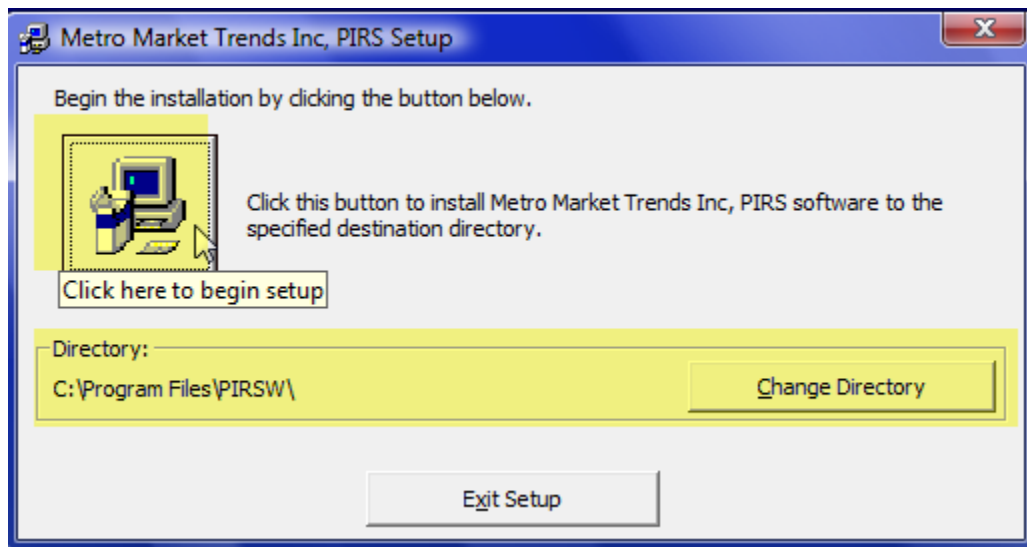
3. If the following screen displays, click "Run".



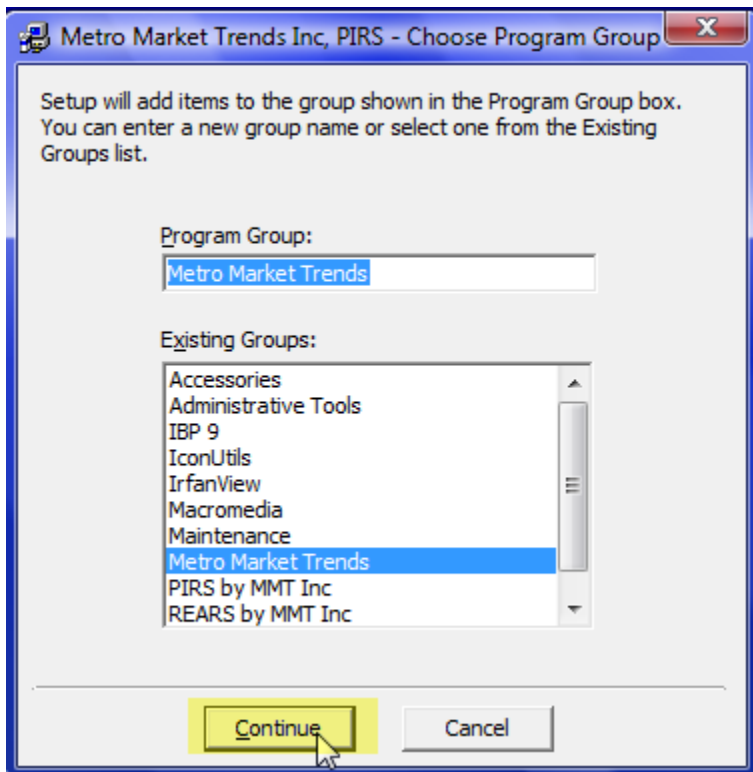
4. Click "Unzip" to accept the default location to unzip the files.



5. The following screen will display next. If the directory displays anything other than **C:\Program Files\PIRSW**, we recommend you click on the change directory button and select this path. Then click on the Install button on the top left of the screen to start the installation process.



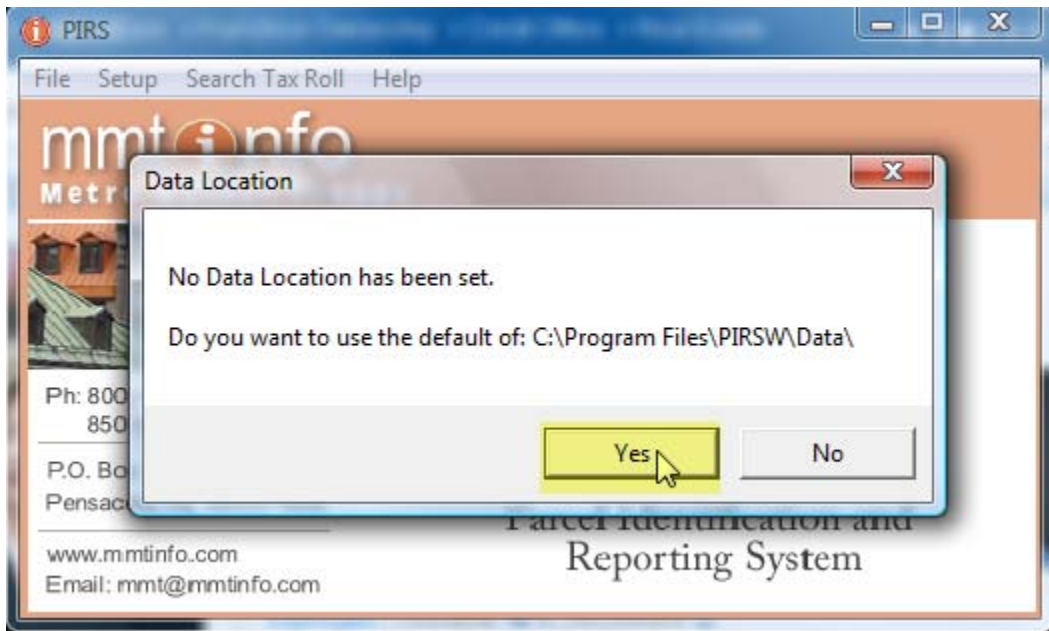
- When the following screen appears, we recommend you accept the displayed program group by clicking on Continue.



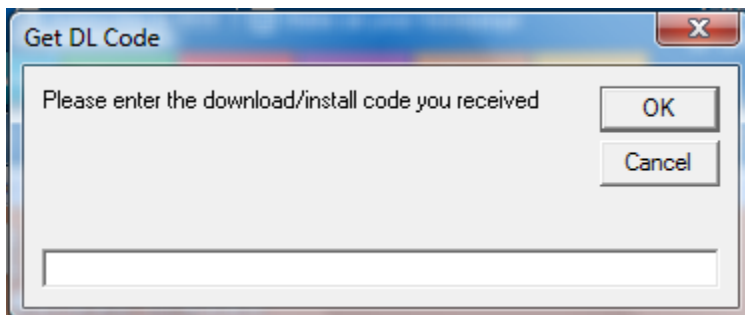
- If you want the PIRS icon to display on your desktop click Yes.



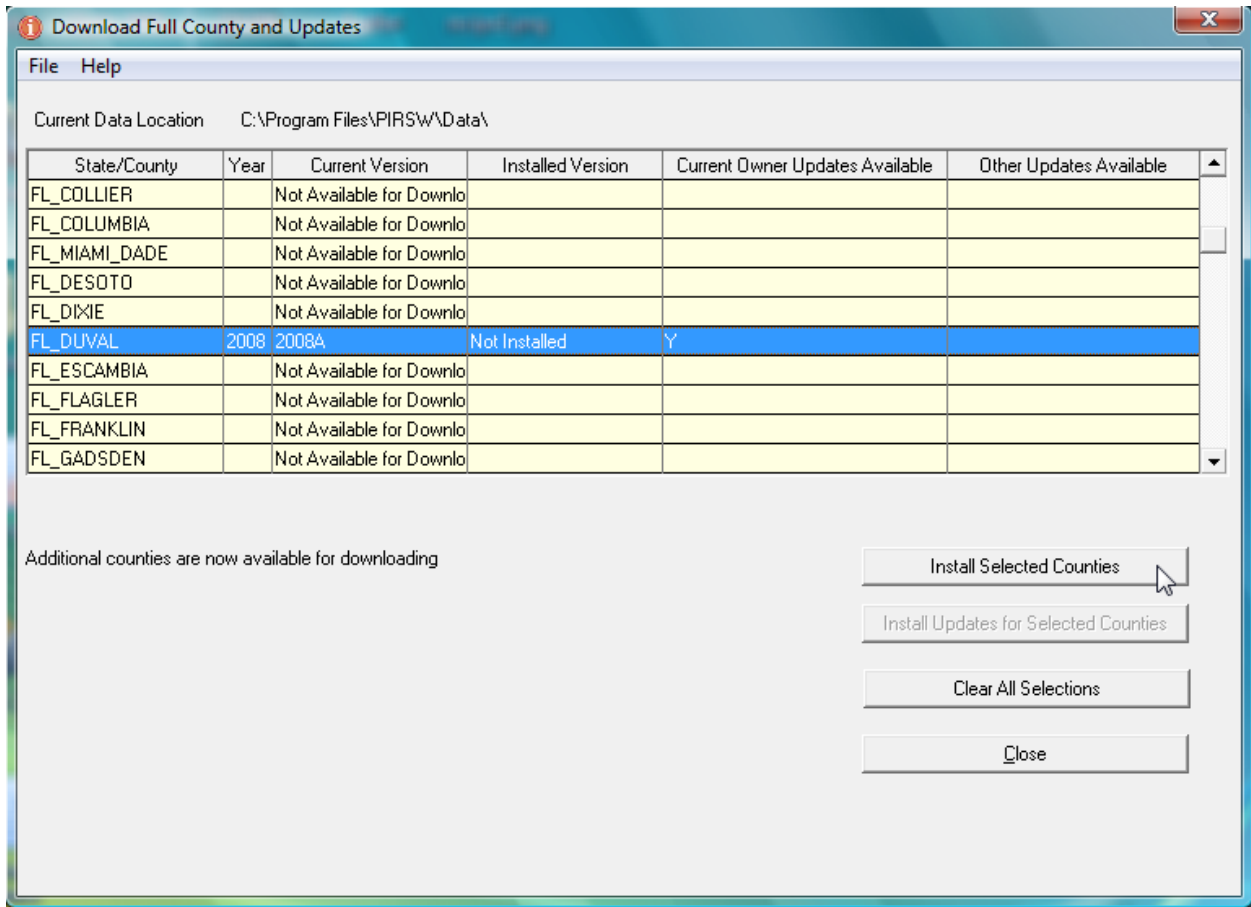
8. We recommend you accept the data location of C:\Program Files\PIRSW\Data.



9. In the email message you received from MMT, there was a Download/Install Code for your firm. Enter that code in the box below.



10. The system will prompt for you to install county data for which your firm subscribes. Click on a county name to select an individual county. To install multiple counties, simply highlight the first county, then Shift/Click to highlight addition counties, then press '**Install Selected Counties**'.



- When you open the newly installed county the system will prompt that the registration for this county cannot be found. Answer "Yes" to register this county.



12. A screen similar to the following will display prompting you to enter your registration information.

METRO MARKET TRENDS SOFTWARE LICENSE AND SUBSCRIPTION AGREEMENT

DISCLAIMER

The Parcel Identification Reporting System (PIRS) is a trademark of Metro Market Trends, Inc. also known fictitiously as MMTinfo, and as MMT. Microsoft Office Suite and Windows are registered trademarks of Microsoft Corporation. Other product names mentioned in this manual may be trademarks or registered trademarks of their respective companies and are hereby acknowledged.

The information contained in the Parcel Identification Reporting System (PIRS) has been compiled primarily from public records, for informational purposes only. Each county property appraiser compiles the basic data. This data is then converted and enhanced by Metro Market Trends, Inc. No liability is assumed by Metro Market Trends, Inc., the county property appraiser, or other data sources for the accuracy or completeness of this information.

GENERAL TERMS

This is a legal agreement between you, the end user, and Metro Market Trends, Inc. The enclosed Parcel Identification Reporting System® (PIRS) Software Program and accompanying data is Licensed by Metro Market Trends, Inc. for use only on the terms set forth herein. Please read the License and Subscription Agreement.

Installing this software, registering as a user, and downloading the data indicates that you have read, understand, and accepted these terms. If you

Customer #	<input type="text" value="MMT"/>
User Name	<input type="text" value="Susan"/>
Computer Name	<input type="text" value="SUSAN-PC"/>
Product	<input type="text" value="FL_2008_Putnam"/>
Street Address	<input type="text"/>
Zip Code:	<input type="text" value="32504"/>
Home or Office	<input type="text" value="Office"/>
E-Mail Address	<input type="text" value="smartin@bellsouth.net"/>

13. When you have successfully registered, a screen similar to the following will display.

