

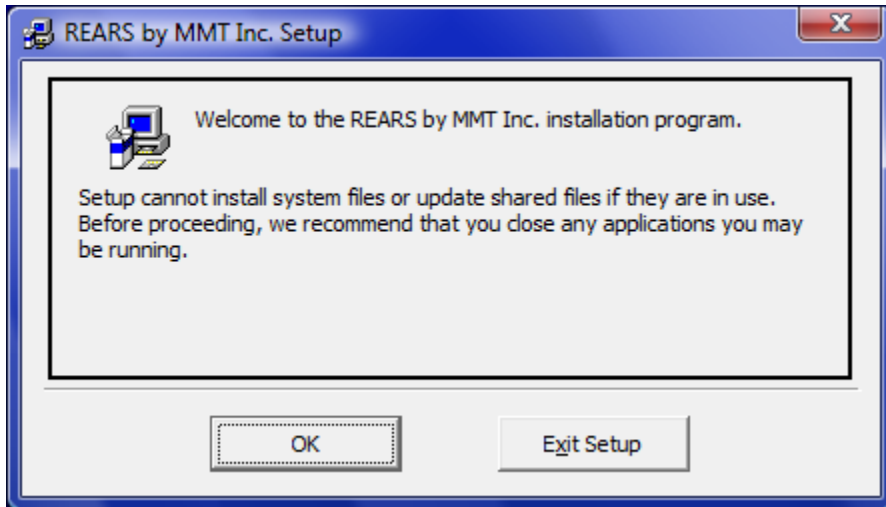
REARS - Installation Instructions

Step 1: Install the REARS Program

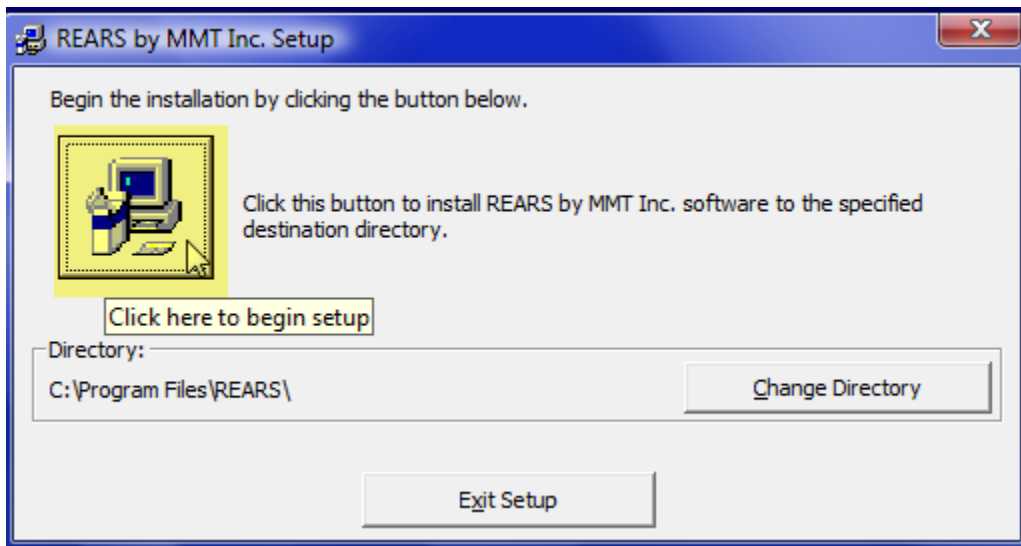
1. Place the REARS program CD in the CD-ROM drive.
2. If the following menu does not automatically display, navigate to the CD-ROM drive and double-click on **Installmenu.exe**.
3. From the menu below, select **Install REARS**.



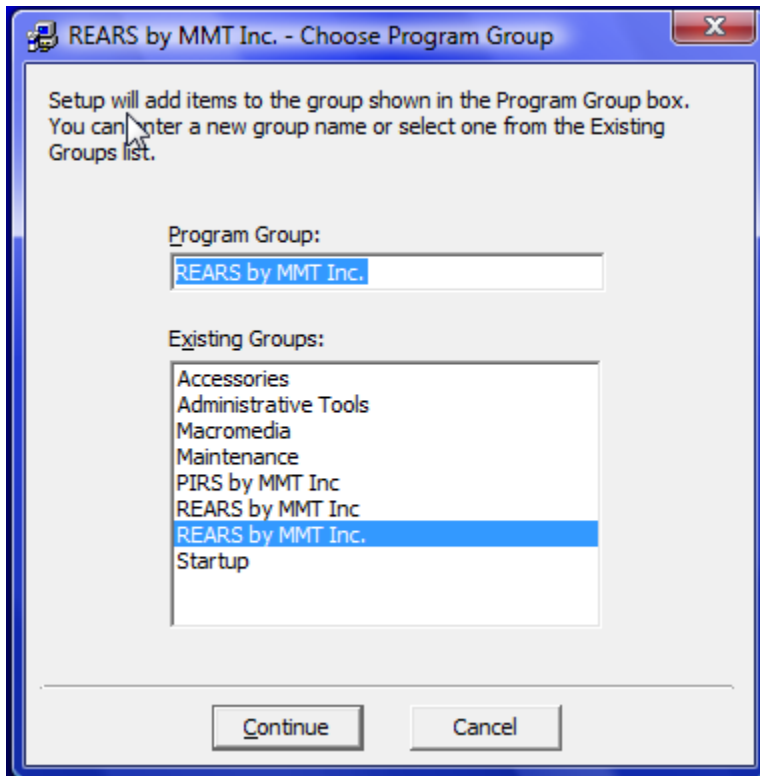
4. Next, a screen similar to the following will appear:



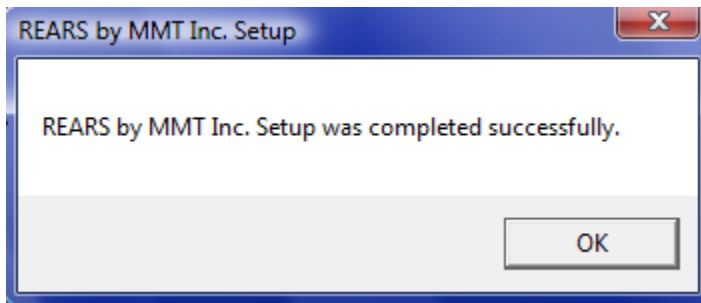
5. Close all open files, then click **OK**.
6. The following screen will appear. Click the **Install button (highlighted below in yellow)** to begin the product installation.



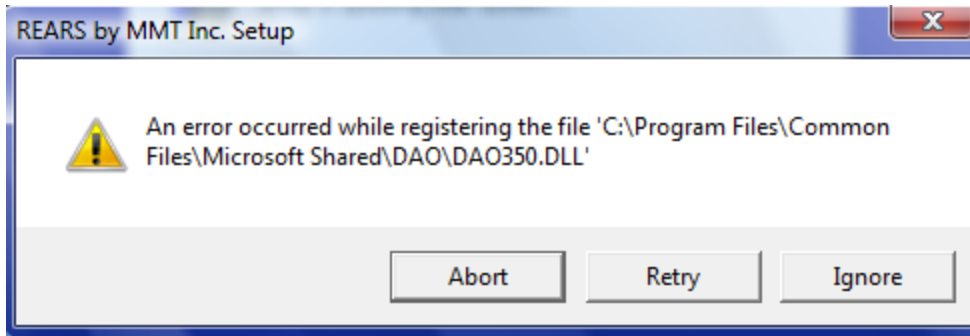
7. The following screen will appear. We recommend you accept the displayed program group by clicking on **Continue**.



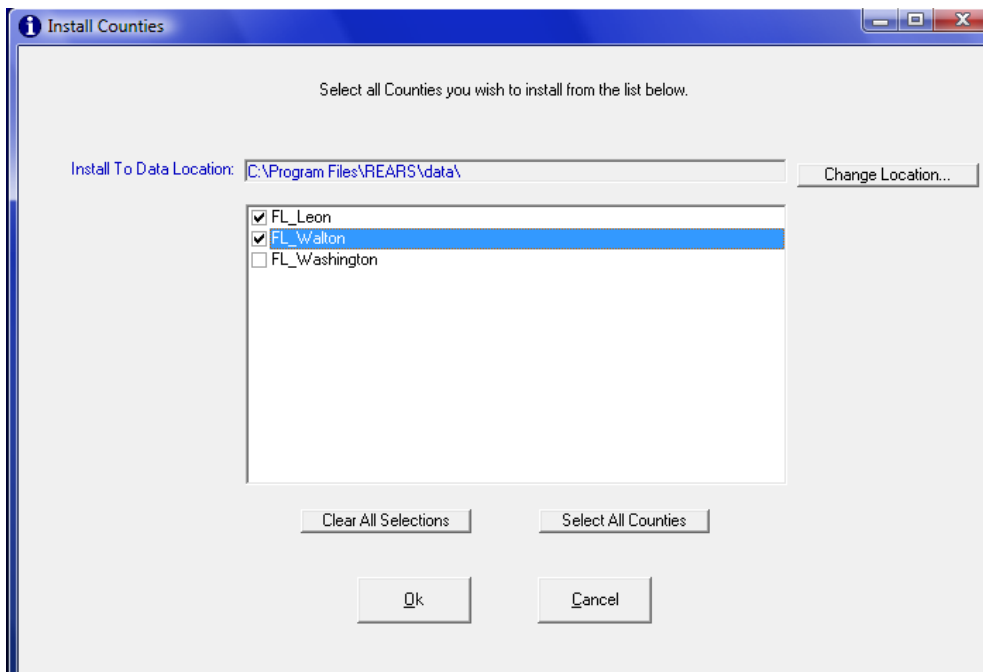
8. Once the REARS product has successfully installed, you will see the following screen. Click **OK** to finish.



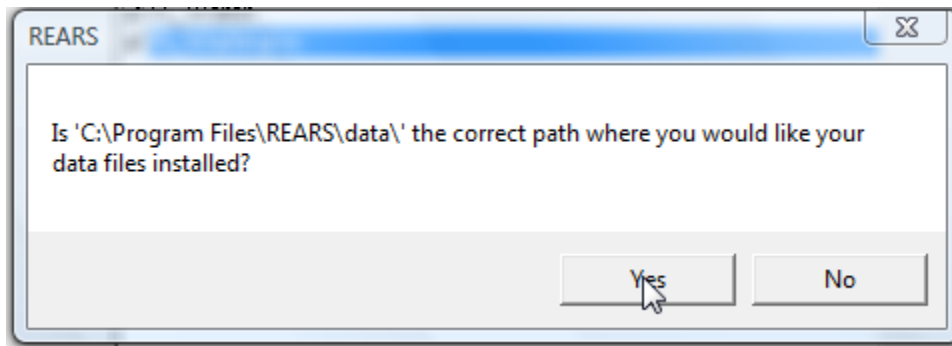
NOTE: Users of the **Windows Vista Operating System** might see the following error message displayed. Click on **Ignore** and continue the installation.



9. Next, the installation program will automatically install the county data files. A menu similar to the following will display the county names you have purchased for REARS:



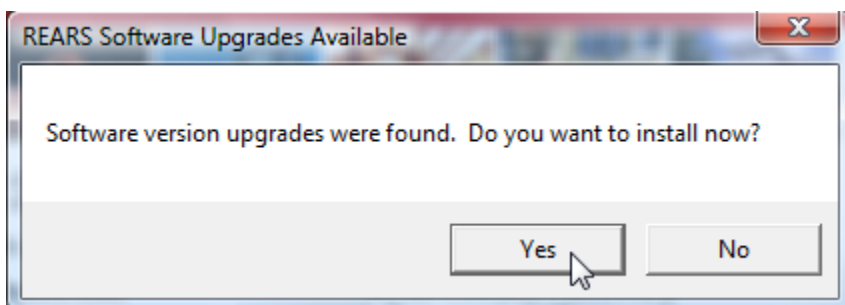
10. Place a checkmark in the box beside the counties you wish to install and click OK.
11. We recommend you accept the default data path as shown below by clicking on **YES**.



12. Next, the REARS program menu will display as follows and automatically check across the Internet for program updates.

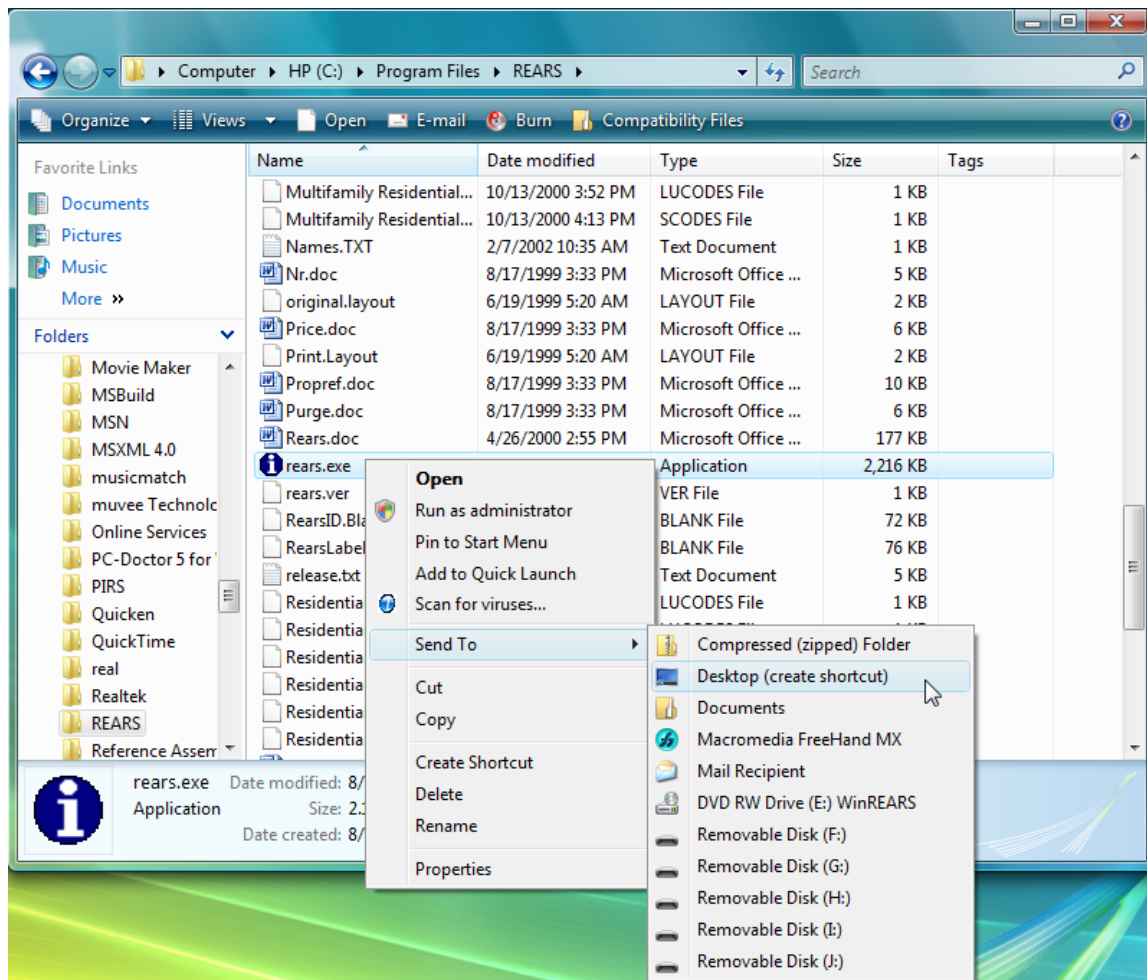


13. If program updates are found, we recommend you click **YES** to install the most current updates to REARS.



Step 3: Create a Desktop Shortcut to REARS

1. Navigate to the REARS executable file - this file name can be found when you click on “Programs” as well as by navigating to – > **C:/Program Files/REARS/rears.exe** (note: your computer settings may not allow you to see the “exe” extension)
2. Right-click on the rears.exe file and select **Send To -> Desktop (create shortcut)**



3. If your computer uses Windows XP or a prior version of Windows, your install is now complete.

Step 4: Windows Vista Operating System ONLY.

If your computer uses Windows Vista, then after installing, right-click on your REARS desktop icon, click **Properties → Compatibility → Run as Administrator.**